

# Sinfonia in Do maggiore

## Flauto traversiere I

T. Albinoni (1671-1751)

[1.] Allegro

5

9

13

17

*piano*

22

*forte*

*tr*

27 *tr*

31

35

39

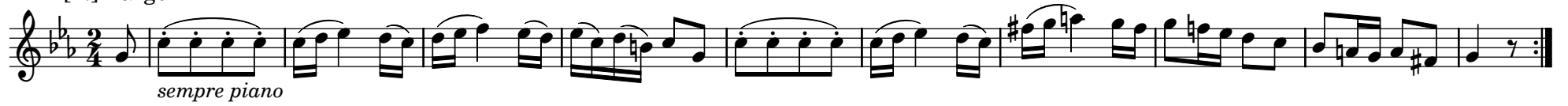
43

48

53

The image shows a musical score for the first flute part of a symphony. It consists of seven staves of music, numbered 27 through 53. The notation includes various rhythmic patterns, such as sixteenth and thirty-second notes, and rests. There are also dynamic markings like *tr* (trill) and *z* (zaccato). The key signature changes from one flat to two flats between measures 35 and 39. The score ends with a double bar line at measure 53.

## [2.] Largo



## [3.] Allegro

