

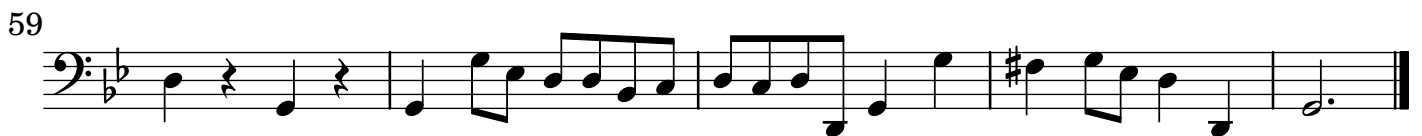
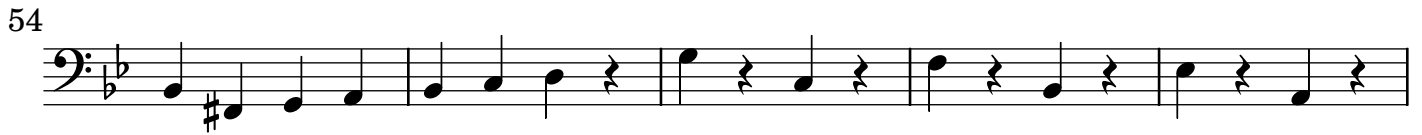
Sinfonia in sol minore

Fagotto

T. Albinoni (1671-1751)

[1.] Sinfonia all[egr]o

The image displays a musical score for the Bassoon part of the first movement of the Sinfonia in sol minore by Tomaso Albinoni. The score is written in bass clef with a key signature of one flat (B-flat) and a common time signature (C). The tempo is marked 'all[egr]o'. The score consists of ten staves of music, with measure numbers 5, 9, 13, 17, 21, 25, 29, 33, 38, and 42 indicated at the beginning of their respective staves. The music features a variety of rhythmic patterns, including eighth and sixteenth notes, and rests. There are several accidentals, including sharps and naturals, throughout the piece. The notation includes slurs, ties, and dynamic markings such as 'p' (piano) and 'f' (forte).



[2.] Larghetto tacet

[3.] All[egr]o

