

Suite: Tancredi, Prologue

Ms 25, Philidor, Gallica, BNF, Paris

I Dessus

A. Campra (1660-1744)

1. Ouverture

5

10

1. 15 2.

20

25

30

35

40

2. Passacaille

5

10

15

20

[Flûtes]

25

30

35

[Tous]

40

45

50

55

60

65

70



75

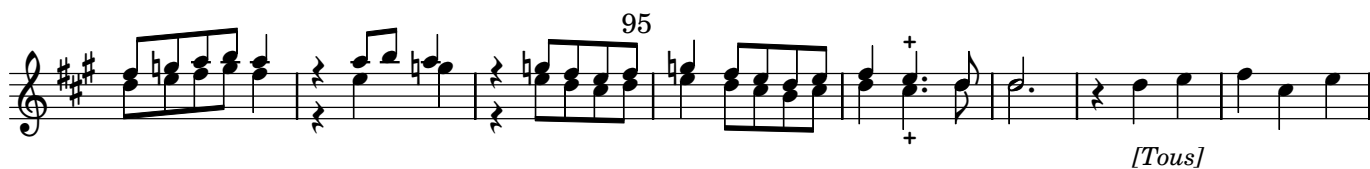


80



85

90



95

[Tous]

100



105



110

115



120



125

130



135

3. Gigue



5



10



15



20



25

4. Air des plaisirs

5



10



15



20

25

30



35

40



5. Passepied [I]

5



10

15



20



6. 2.e Passepied

5



10

15



20

