

Concerto VIII

Fatto per la notte di Natale

Violino I del concertino

A. Corelli (1653-1713)

Vivace



Grave. Arcate, Sostenute e come stà



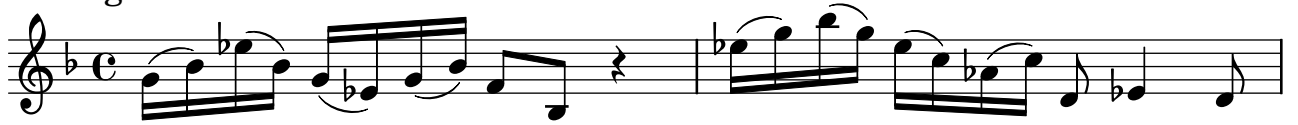
Allegro



Piano

Forte

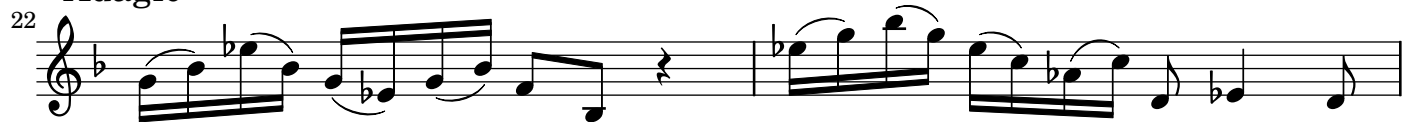
Adagio



Allegro



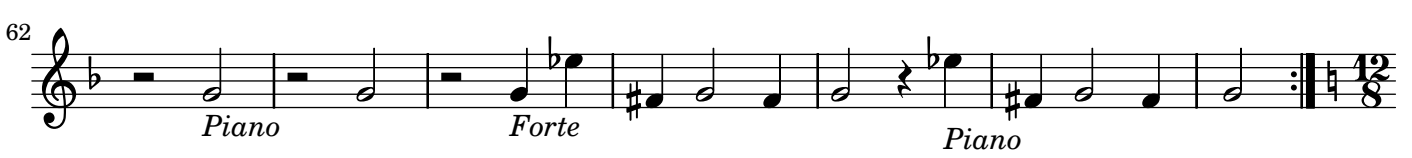
Adagio

*Piano*

Vivace

*Piano*

Allegro



Pastorale ad Libitum. Largo

69 *Soli*

72 *Tutti*

76 *Soli*

79 *Tutti*

82 *Soli*

86 *Tutti*

90 *Soli* *Tutti*

93 *Piano* *Forte* *Piano* *Forte*

Detailed description of the musical score: The score is written for a single violin part in treble clef. It begins at measure 69 with a 'Soli' dynamic. The music features a mix of eighth and sixteenth notes, often beamed together. Measure 72 marks the beginning of a 'Tutti' section, characterized by longer note values and a more sustained texture. Measure 76 returns to 'Soli' with more intricate sixteenth-note passages. Measure 79 is marked 'Tutti' again. Measure 82 is 'Soli'. Measure 86 is 'Tutti'. Measure 90 is 'Soli' and 'Tutti'. Measure 93 is marked with 'Piano' and 'Forte' dynamics, indicating a change in volume and possibly articulation.

97 
Soli *Tutti*

100 
Soli *Tutti*

104 
Soli

107 
Tutti

111 
Soli

114 
Tutti *Piano*

118 
Pianissimo *Forte*

122 
Piano *Pianissimo*