

Sonata X for two German Flutes and a Bass

Flauto Travers[o] Primo

W. de Fesch (1687-1761)

[1.] Largo

Musical score for the first movement, Largo, in G major, 3/4 time. The score consists of six staves of music. The first staff starts with a treble clef, a key signature of one sharp (F#), and a common time signature (C). The music features a series of eighth and sixteenth notes, with trills (tr) indicated above several notes. The second staff begins at measure 4, the third at measure 8, the fourth at measure 13, the fifth at measure 17, and the sixth at measure 21. The piece concludes with a double bar line at the end of the sixth staff.

[2.] Vivace

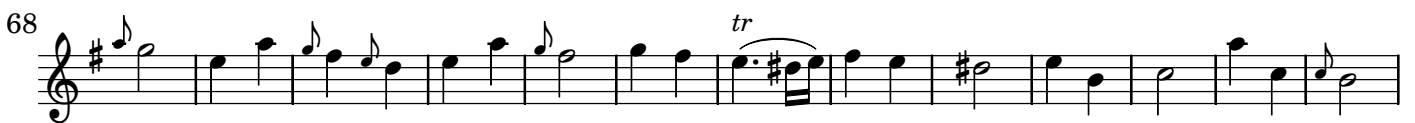
Musical score for the second movement, Vivace, in G major, 3/4 time. The score consists of four staves of music. The first staff starts with a treble clef, a key signature of one sharp (F#), and a 3/4 time signature. The music is more rhythmic, featuring eighth and sixteenth notes, with a triplet (3) indicated above a group of notes. The second staff begins at measure 6, the third at measure 12, and the fourth at measure 17. The piece concludes with a double bar line at the end of the fourth staff.

Musical score for Flauto Travers[o] Primo, measures 22-81. The score is written in treble clef with a key signature of one sharp (F#). The music consists of ten staves of notation, each starting with a measure number. The notation includes various rhythmic values, accidentals, and articulation marks such as slurs and trills. A repeat sign is present at measure 37. A trill (tr) is indicated above a note in measure 67. The score concludes with a double bar line and repeat dots at measure 81.

[3.] Adagio



[4.] Vivace



Pia.