

Suite da Radamistus

Viola

G. F. Händel (1685-1759)

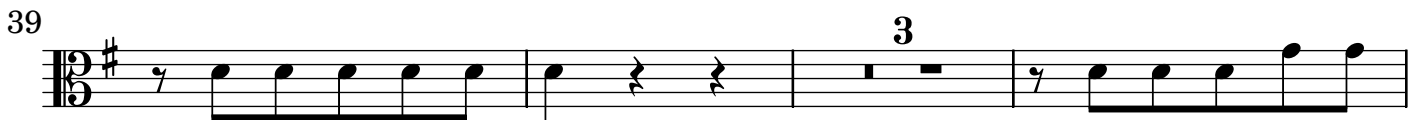
Ouverture



Largo



Allegro



forte



53

57

62 *tr*

66

72

76

81

1. 2.

1. Air andante

7

13

20

28

2. Bour[r]ée



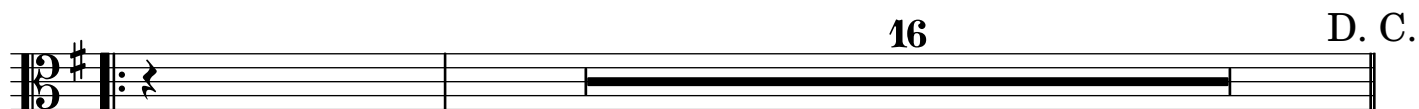
6



11



16 D. C.



3. Aria andante



5



17



21



25



29 D. C.



4. Jardiniers all[egr]o

Measures 1-4: Bass clef, key signature of one sharp (F#), 2/4 time signature. The melody consists of eighth notes. Dynamics: *piano* (measures 1-3), *forte* (measure 4).

Measures 5-8: Bass clef, key signature of one sharp (F#), 2/4 time signature. The melody consists of eighth notes. Dynamics: *piano* (measures 5-6), *forte* (measures 7-8).

Measures 9-12: Bass clef, key signature of one sharp (F#), 2/4 time signature. Measure 9 has a fermata. Measure 10 has a grace note. Measure 11 has a fermata. Measure 12 has a grace note. Dynamics: *piano* (measures 9-10), *pp* (measures 11-12).

Measures 13-16: Bass clef, key signature of one sharp (F#), 2/4 time signature. The melody consists of eighth notes. Dynamics: *forte* (measures 13-16). Ends with a repeat sign.

Measures 17-20: Bass clef, key signature of one sharp (F#), 2/4 time signature. The melody consists of eighth notes. Dynamics: *piano* (measures 17-18), *forte* (measures 19-20), *piano* (measure 20).

Measures 21-25: Bass clef, key signature of one sharp (F#), 2/4 time signature. The melody consists of eighth notes. Dynamics: *forte* (measures 21-22), *piano* (measures 23-24), *forte* (measures 25).

Measures 26-31: Bass clef, key signature of one sharp (F#), 2/4 time signature. Measure 26 has a fermata. Measure 27 has a grace note. Measure 31 has a sharp sign. Dynamics: *piano* (measures 26-31).

Measures 32-37: Bass clef, key signature of one sharp (F#), 2/4 time signature. Measure 32 has a sharp sign. Measure 33 has a sharp sign. Measure 34 has a fermata. Measure 35 has a fermata. Measure 36 has a fermata. Measure 37 has a sharp sign. Dynamics: *piano* (measures 32-37). Includes a triplet of eighth notes in measure 35.

46

piano *forte* *piano* *forte*

51

piano *forte*

56

3

5. Menuet alternativement

7

13

19

25

31

D.C.

37

16 20 D. C.