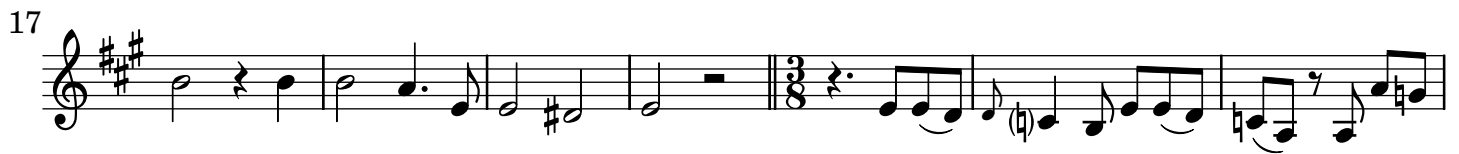


Che farai Lidia cara

Violino III

L. Leo (1694-1744)

[1.] Introdu[zion]e - Alla francese



[2.] Recitativo - Tacet

[3.] Largo e maestoso



10

13

16

19

23

27

31

35

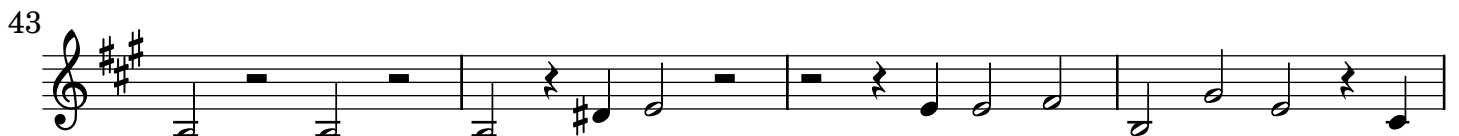
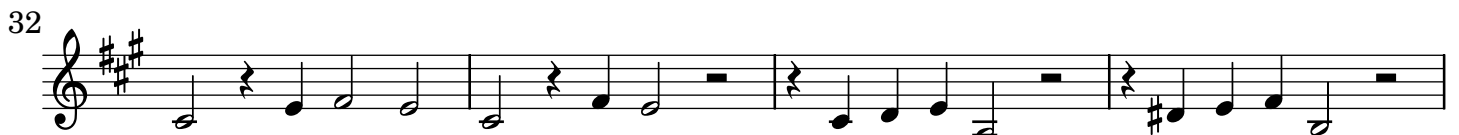
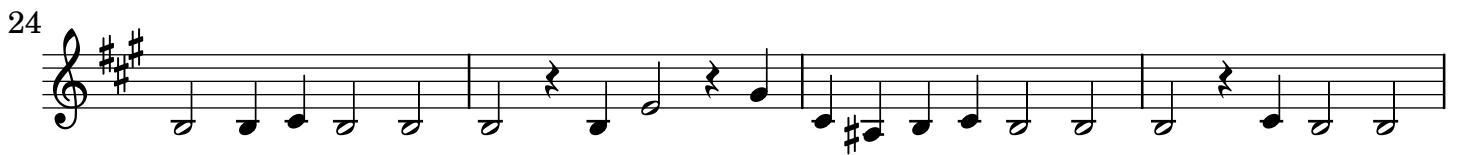
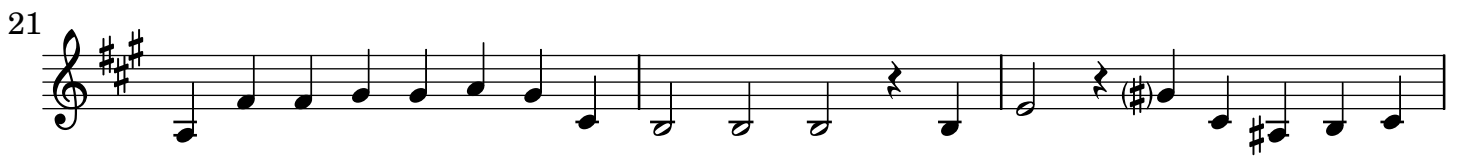
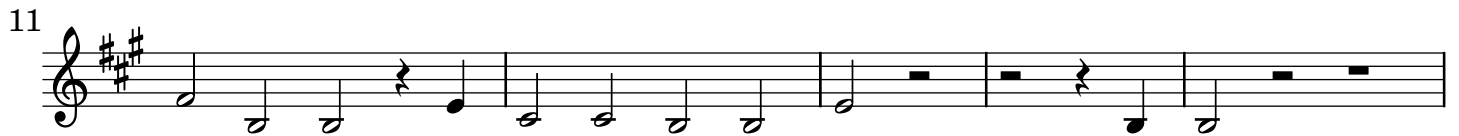
39

42

Da Capo

[4.] Recitativo - Tacet

[5.] Aria Non sforzato



47



51



57



62



67



72



79



85



92



98

