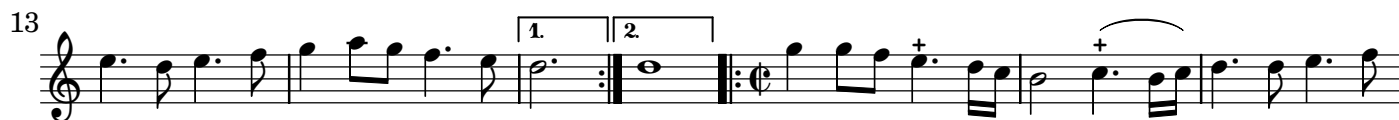


Trios de la Chambre LWV 35/1-9

Dessus II

J-B Lully (1632-1687)

[1.] Symphonie [LWV35/1]



[2.] Sarabande [LWV35/2]



[3.] Menüet [LWV35/3]

Musical score for Menuet [LWV35/3] in 3/4 time. The score consists of four staves of music. The first staff starts with a treble clef and a 3/4 time signature. The key signature has one sharp (F#). The melody begins with a quarter note G4, followed by quarter notes A4, B4, and C5. A fermata is placed over the C5. The second staff starts at measure 8 and includes a first ending bracket over measures 10-11 and a second ending bracket over measures 12-13. The third staff starts at measure 14 and includes a first ending bracket over measures 16-17 and a second ending bracket over measures 18-19. The fourth staff starts at measure 21 and includes a first ending bracket over measures 23-24 and a second ending bracket over measures 25-26.

[4.] Dans nos bois ... [LWV35/4]

Musical score for Dans nos bois ... [LWV35/4] in 3/4 time. The score consists of four staves of music. The first staff starts with a treble clef and a 3/4 time signature. The key signature has one sharp (F#). The melody begins with a quarter note G4, followed by quarter notes A4, B4, and C5. A fermata is placed over the C5. The second staff starts at measure 7 and includes a first ending bracket over measures 8-9 and a second ending bracket over measures 10-11. The third staff starts at measure 14 and includes a first ending bracket over measures 16-17 and a second ending bracket over measures 18-19. The fourth staff starts at measure 20 and includes a first ending bracket over measures 22-23 and a second ending bracket over measures 24-25.

[5.] Symphonie [LWV35/5]

Musical score for Symphonie [LWV35/5] in 3/4 time. The score consists of two staves of music. The first staff starts with a treble clef and a 3/4 time signature. The key signature has one sharp (F#). The melody begins with a quarter note G4, followed by quarter notes A4, B4, and C5. A fermata is placed over the C5. The second staff starts at measure 10 and includes a first ending bracket over measures 12-13 and a second ending bracket over measures 14-15.

[6.] Symphonie [LWV35/6]

Musical score for Dessus II, Symphonie [LWV35/6]. The score is written in 3/4 time and consists of four staves of music. The first staff (measures 1-6) begins with a treble clef and a 3/4 time signature. The second staff (measures 7-12) includes first and second endings. The third staff (measures 13-18) continues the melody. The fourth staff (measures 19) concludes the piece with a double bar line.

[7.] Symphonie [LWV35/7]

Musical score for Dessus II, Symphonie [LWV35/7]. The score is written in 3/4 time and consists of four staves of music. The first staff (measures 1-5) begins with a treble clef and a 3/4 time signature. The second staff (measures 6-12) includes a first ending. The third staff (measures 13-19) includes a second ending. The fourth staff (measures 20) concludes the piece with a double bar line.

[8.] Symphonie [LWV35/8]

Musical score for Dessus II, Symphonie [LWV35/8]. The score is written in 3/4 time and consists of two staves of music. The first staff (measures 1-6) begins with a treble clef and a 3/4 time signature. The second staff (measures 7) concludes the piece with a double bar line.

