

Sonata [QV 2, Anh 3]

a Flauto Traversiero, Flauto Dolce e Basso

Flauto traversiero

J. J. Quantz (1697-1773)

[1.] Affettuoso

4

7

10

13

16

20

23

26

29

piano

[2.] Alla breve

Musical score for Flauto traversiero, page 2, measures 1-72. The score is written in treble clef with a common time signature (C). The tempo is marked [2.] Alla breve. The key signature is one sharp (F#). The score consists of 12 staves of music, each starting with a measure number. Trills (tr) are indicated above certain notes in measures 1, 7, 26, and 61. The music features a variety of rhythmic patterns, including eighth and sixteenth notes, and rests.

Measures 1-6: First staff, starting with a whole note rest, followed by a series of eighth and sixteenth notes. A trill (tr) is marked above the final note of the first measure.

Measures 7-12: Second staff, starting with a quarter rest, followed by eighth and sixteenth notes. A trill (tr) is marked above the final note of the second measure.

Measures 13-19: Third staff, starting with eighth and sixteenth notes, followed by a quarter note and a half note. A trill (tr) is marked above the final note of the third measure.

Measures 20-25: Fourth staff, starting with eighth and sixteenth notes, followed by a quarter note and a half note.

Measures 26-30: Fifth staff, starting with a trill (tr) over a quarter note, followed by eighth and sixteenth notes.

Measures 31-35: Sixth staff, starting with eighth and sixteenth notes, followed by a quarter note and a half note.

Measures 36-42: Seventh staff, starting with a quarter rest, followed by eighth and sixteenth notes.

Measures 43-48: Eighth staff, starting with eighth and sixteenth notes, followed by a quarter note and a half note.

Measures 49-54: Ninth staff, starting with a trill (tr) over a quarter note, followed by eighth and sixteenth notes.

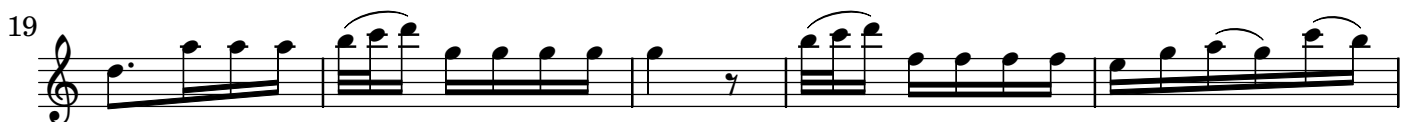
Measures 55-60: Tenth staff, starting with eighth and sixteenth notes, followed by a quarter note and a half note.

Measures 61-66: Eleventh staff, starting with eighth and sixteenth notes, followed by a quarter note and a half note. A trill (tr) is marked above the final note of the first measure.

Measures 67-72: Twelfth staff, starting with eighth and sixteenth notes, followed by a quarter note and a half note.



[4.] Vivace



Musical score for Flauto traversiero, page 5, measures 24-78. The score is written in treble clef and includes various musical notations such as slurs, trills (tr), and first/second endings.

Measures 24-30: First system, measures 24-30. Measure 30 contains a trill (tr).

Measures 35-41: Second system, measures 35-41. Measures 35-36 include first and second endings.

Measures 47-52: Third system, measures 47-52. Measure 52 contains a trill (tr).

Measures 57-64: Fourth system, measures 57-64. Measure 64 contains a triplet (3).

Measures 69-73: Fifth system, measures 69-73.

Measures 78-84: Sixth system, measures 78-84. Measure 78 contains a trill (tr). Measures 83-84 include first and second endings.