

[2.] Courante

Musical score for Courante, measures 1-22. The piece is in G major and 3/4 time. The notation is in bass clef. Fingerings are indicated by numbers 1-5 above notes. Ornaments (trills) are present above notes in measures 1, 3, 5, 7, 9, 11, 13, 15, 17, 19, and 21. Measure numbers 5, 9, 13, 17, and 22 are placed at the beginning of their respective lines. The score ends with a repeat sign and a fermata in measure 22.

[3.] Gavotte en Rondeau

Musical score for Gavotte en Rondeau, measures 1-33. The piece is in G major and 3/4 time. The notation is in bass clef. Fingerings are indicated by numbers 1-5 above notes. Ornaments (trills) are present above notes in measures 1, 3, 5, 7, 9, 11, 13, 15, 17, 19, and 21. Measure numbers 8, 17, 25, and 33 are placed at the beginning of their respective lines. The score ends with a repeat sign and a fermata in measure 33.

tasto solo

[4.] Branle

6 6 6 6 6 6 5 6 # 4 6 6

6 5 4 # 6 6 6 6 6 5 6 5 6

6 7 6 5 6 5 6 6 6 5 4 3

[5.] Sarrabande [sic]

6 6 # 6 6 4 2 6 5 6 #

8 # 6 # 6 6 6 6 4 2 6 5 6 #

[6.] Fantasie

6 6 6 6

7

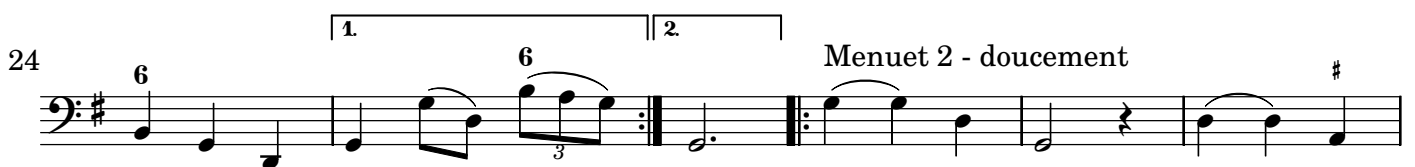
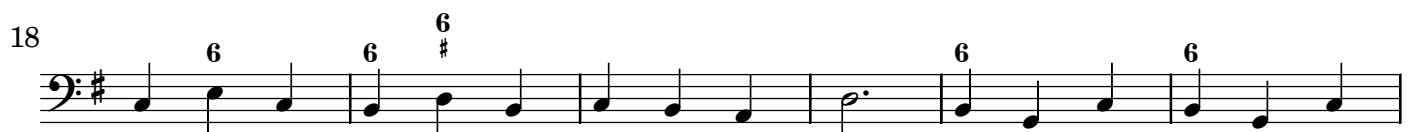
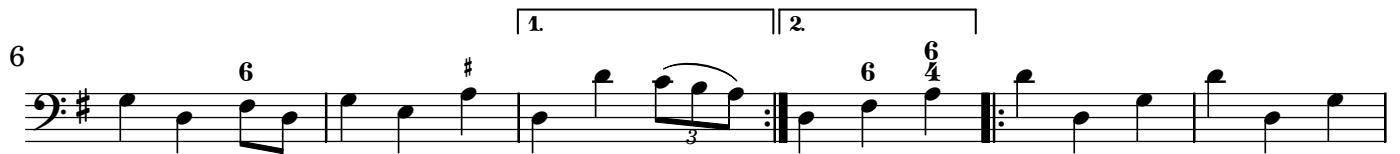
13 6 5 6 6 4 5 3 2 #

21 2 3 9 8 7 # 6 4 5 # #

28 6 4 5 # 6 5 6 6 5 6 # 5 6 6 4 2 6 7 #



[7.] Menuet 1



Menuet 2 - doucement



43 $\frac{4}{2}$ 6 6 5

50 # 6 6 1 2

[8.] Rossignol

5 $\frac{6}{5}$ $\frac{6}{4}$ $\frac{6}{5}$ $\frac{6}{5}$ $\frac{6}{5}$ $\frac{6}{5}$ 6 6

11 $\frac{6}{5}$ $\frac{6}{5}$ 6 6 7 6

17 # # # # 6 6 # 6

23 $\frac{6}{5}$ 6 $\frac{6}{5}$ $\frac{6}{4}$ $\frac{6}{5}$ 6

29 $\frac{6}{5}$ 6 6 6 $\frac{6}{5}$ $\frac{6}{5}$

35 6 6 6 6 $\frac{6}{5}$ 6 6

41 6