

# Sinfonia concertante a 8 [ZWV 189]

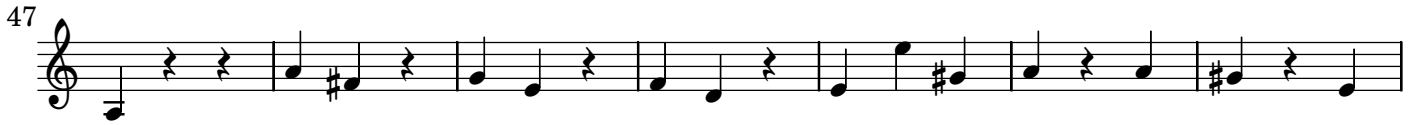
con 2 Oboi, 2 Violini, Viola, Violoncello, Fagotto e Basso

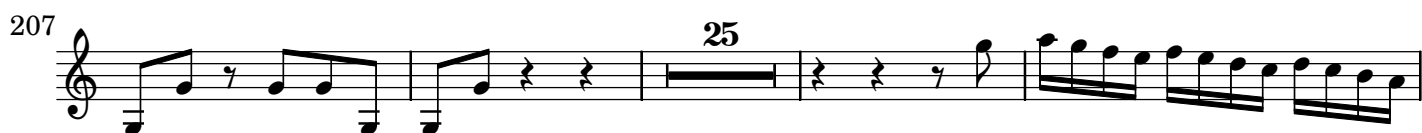
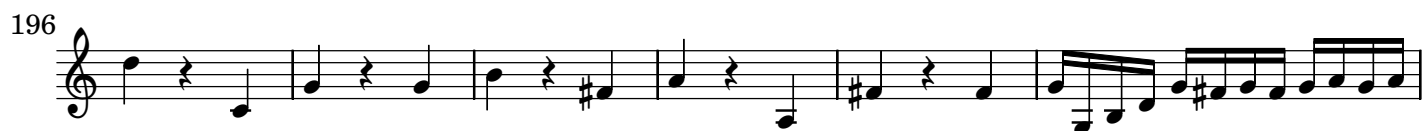
Violino di ripieno I

J. D. Zelenka (1679-1745)

[1.] Simphonia







255

260

281

285

295

300

311

316

321

326

332

*piano* *forte*

Detailed description: This page contains ten staves of musical notation for the first ripieno violin part. The music is in treble clef with a key signature of one sharp (F#). The score includes various rhythmic patterns, including eighth and sixteenth notes, and rests. Measure numbers 255, 260, 281, 285, 295, 300, 311, 316, 321, 326, and 332 are indicated at the start of their respective staves. Above measure 260, there are markings for fingerings: '2' above the second measure and '14' above the final measure. Above measure 285, there is a marking '5' above the fifth measure. Above measure 300, there are markings '3' above the third and seventh measures. Above measure 321, there is a marking '3' above the third measure. The piece concludes at measure 332 with a double bar line. Dynamic markings 'piano' and 'forte' are placed below the final two staves.