

2 Trii [RV 82] e [RV 85]

Basso

A. Vivaldi (1678-1741)

I. Trio [RV 82]

[1.] All[egr]o non molto

6

11

16

21

26

This section contains the first five staves of the musical score for the Bass part of the first movement of Trio [RV 82]. The music is in common time (C) and begins with a treble clef. The first staff (measures 1-6) features a series of eighth and sixteenth notes. The second staff (measures 7-12) continues the melodic line. The third staff (measures 13-18) includes a repeat sign and a key signature change to one sharp (F#). The fourth staff (measures 19-24) continues the melody. The fifth staff (measures 25-30) concludes the first section with a repeat sign and a key signature change to one flat (Bb).

[2.] Larghetto

32

41

49

57

This section contains the next four staves of the musical score for the Bass part of the second movement of Trio [RV 82]. The music is in 3/4 time and begins with a treble clef. The first staff (measures 32-40) features a series of eighth and sixteenth notes. The second staff (measures 41-48) continues the melodic line. The third staff (measures 49-56) includes a repeat sign and a key signature change to one flat (Bb). The fourth staff (measures 57-64) concludes the second section with a repeat sign and a key signature change to one sharp (F#).

[3.] All[egr]o

65

74

83

This section contains the final three staves of the musical score for the Bass part of the third movement of Trio [RV 82]. The music is in 2/4 time and begins with a treble clef. The first staff (measures 65-73) features a series of eighth and sixteenth notes. The second staff (measures 74-82) continues the melodic line. The third staff (measures 83-91) concludes the third section with a repeat sign and a key signature change to one sharp (F#).

102

113

This section contains measures 102 to 113 of the Basso part. Measure 102 begins with a repeat sign and a whole rest. The melody consists of eighth and sixteenth notes, with some accidentals (sharps and naturals). Measure 113 ends with a fermata over a half note.

II. Trio [RV 85]

[1.] And[ant]e molto

4

7

10

13

16

19

22

25

28

This section contains measures 1 to 28 of the Trio [RV 85] movement. The key signature has one flat (B-flat), and the time signature is common time (C). The score is written for Basso. Measure 16 includes a repeat sign. The melody is primarily composed of eighth and sixteenth notes, with various accidentals (flats, sharps, naturals) throughout.

31



[2.] Larghetto

35



44



53



62



70



[3.] All[egr]o

78



82



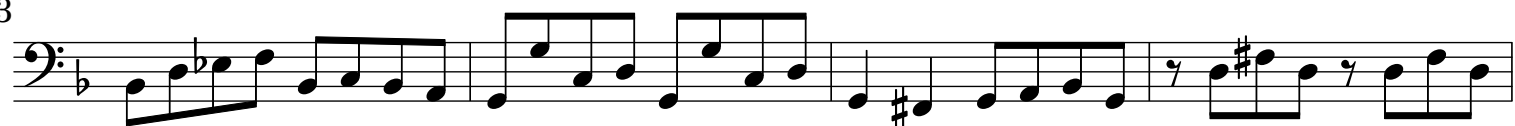
86



89



93



97



101

