

# Concerto Sacro III Op. II

A. Scarlatti (1660 - 1725)

## Violoncello / Basso continuo

### [1.] Infirmata, vulnerata - Largo

5

9

13

16

20

24

28

31

34

38

## Violoncello / Basso continuo

42

46

## [2.] Recitativo - O! Care

## Violoncello / Basso continuo

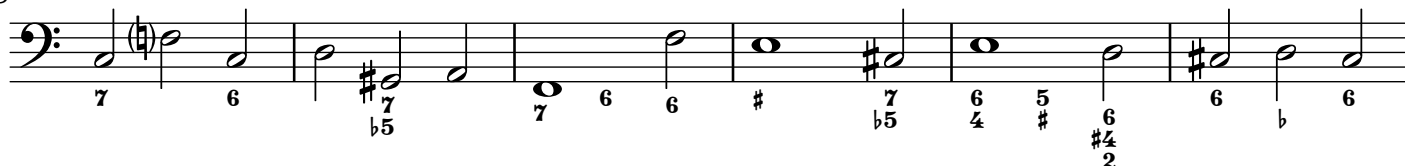
56



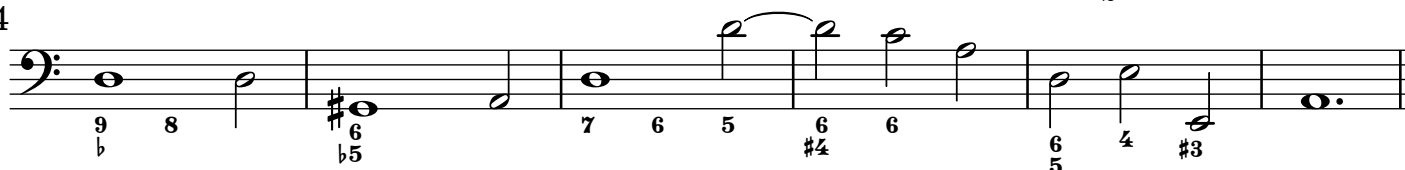
62



68



74



## [4.] Aria andante - Cur quæso crudelis



9



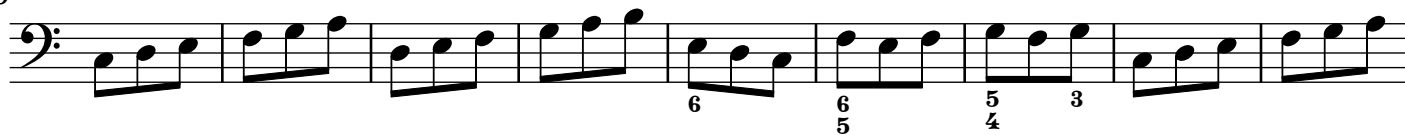
18



27



36



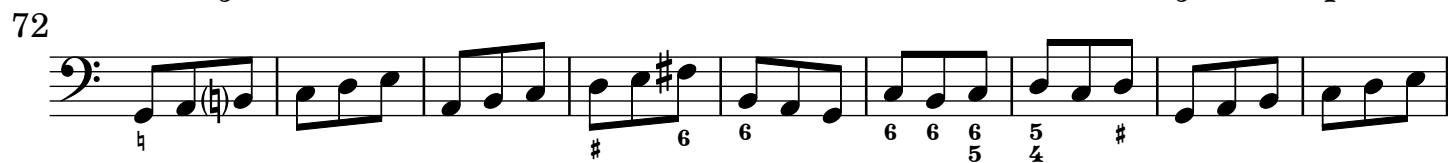
45



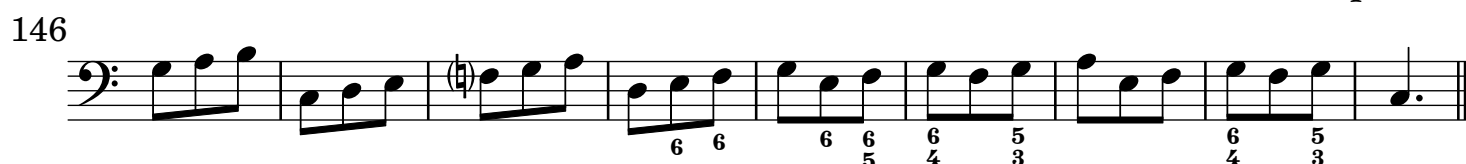
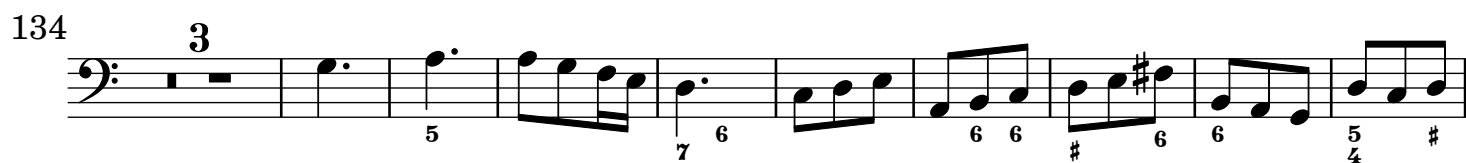
54



## Violoncello / Basso continuo



## Ritornello



## [5.] Recitativo - Vicisti



## Violoncello / Basso continuo

## [6.] Semper gratus - Allegro

5

10

14

18

22

26

30

34

38

41