

Concerto Sacro VII Op. II

A. Scarlatti (1660 - 1725)

Violoncello / Basso continuo

[1.] Diligam te Domine

6 # 6 6 6 7 6 # 6 6 7 #6 6

6 6 6 6 7 6 # 6 # 7 6 # #6 6 6 6

#4 6 6 6 4 #3 # #6 6 6 5 # 6 2

6 #6 # 6 #6 6 7 #6 # 6 6 6 6 5

6 6 b5 5 4 6 4 6 #4 6 6 5 5 3 6 4 3

6 6 b6 4 6 4 6 6 5 3 6 6 5 3 6 #6

6 6 5 4 6 5 3 6 5 3 6 5 3

4 6 # 6 6 b6 5 6 # #4 2

6 6 # 5 #6 # #6 # #6 b 6 # # 4 #

6 # # 4 #

6 # 4 # 6 # 4 #

Violoncello / Basso continuo

[2.] Cantabo Domino

6 6 6 6 6 # 6 # 6 # 6

5 6 6 6 6 6 5 5 3 6 4 3 6

10 6 6 6 # 6 6 # # # # # 6 5 4 #

14 b # 6 6 5 6 6 6 # 6 6 5 6 6

18 6 6 6 6 #6 6 #6 4 # 6

22 4 # 6 6 6 6 6 6 # #6 6

27 6 6 6 6 # 6 # 4 #

32 6 4 # 6 6 6 6 6 # 6 # 6 # 6

37 6 6 6 6 6 6 5 3 6 4 3

41 6 6 6 6 # 6 6 # # # #

45 # # 6 6 5 b # 6 6 5 6 6 6 # 6 6 5

[3.] Benedicam Dominum

This page contains ten staves of musical notation for a bass line. The notation is in bass clef and includes various notes, rests, and fingerings. The staves are numbered 5, 9, 13, 17, 21, 25, 29, 33, 37, and 41. The music is written in a single system, with each staff containing a line of music. The notation includes various notes, rests, and fingerings, with numbers 1-5 indicating fingerings. The music is written in a single system, with each staff containing a line of music. The notation includes various notes, rests, and fingerings, with numbers 1-5 indicating fingerings.

Violoncello / Basso continuo

45

49

53

56

59

[4.] Exaltabo te. A tempo giusto

6

4

7

10

13

15

Violoncello / Basso continuo

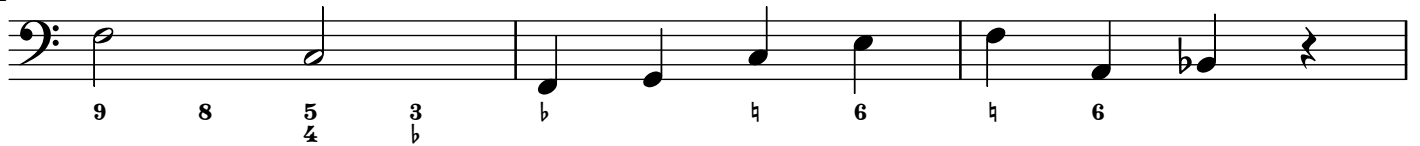
17



19



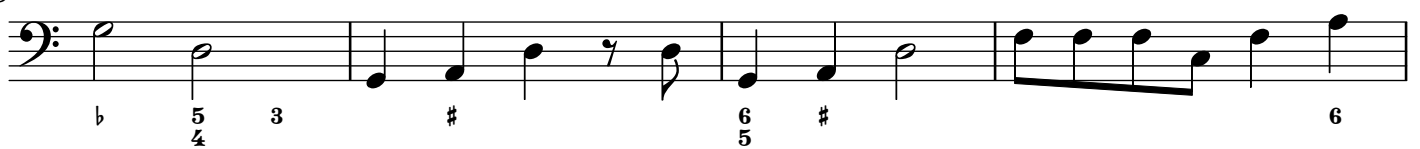
22



25



28



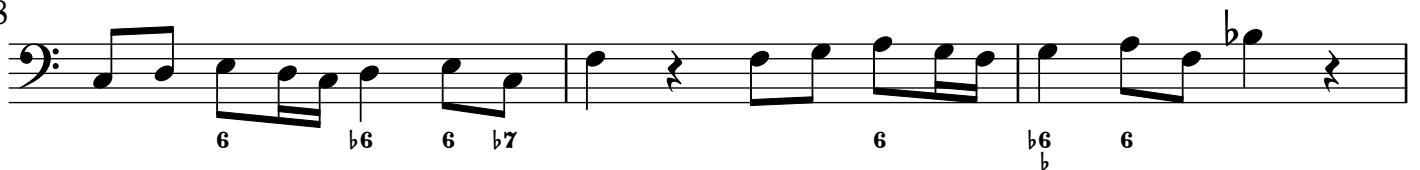
32



35



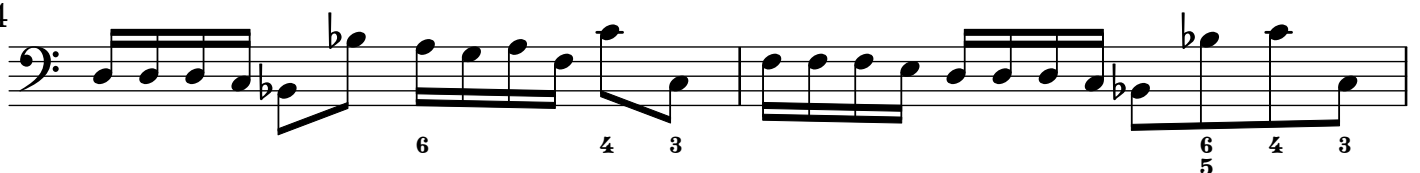
38



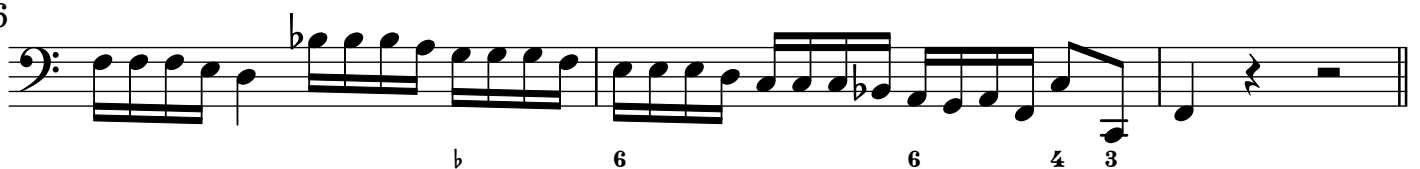
41



44



46



Violoncello / Basso continuo

[5.] Domine Deus salutis meæ

Musical score for Violoncello / Basso continuo, measures 1-46. The score is written in bass clef with a common time signature (C). The key signature is one sharp (F#). The score includes various musical notations such as notes, rests, and accidentals, along with figured bass notation (numbers and sharps) indicating fingerings and intervals. The measures are numbered 1, 6, 11, 16, 21, 25, 29, 33, 38, 42, and 46.