

# Sinfonia in Do minore

G. A. Brescianello (1690c -1758)

## Viola

[1.] Allegro

4

7

10

13

16

19

22

25

28

30

32

35

## Viola

38



41



44



47



50



52



55



58 Adagio



62 Allegro



65

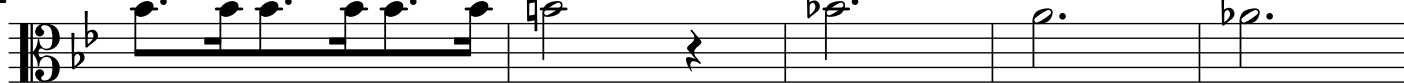


[Andante]

68



72



77



DC al

## Viola

## [2.] Aria

6

11

15

23

27

31

## [3.] Menuet alternat[ivamente]

9

## [4.] Trio

21

29

37

Menuet  
D. C.

## Viola

## [5.] Bourrée

Measures 1-40 of the [5.] Bourrée. The music is in 3/8 time, key of B-flat major (two flats). The score consists of eight staves. Measure numbers 4, 5, 10, 15, 20, 25, 30, 35, and 40 are indicated at the start of their respective staves. The notation includes various note values (quarter, eighth, sixteenth notes), rests, and accidentals (flats, naturals, sharps). The piece concludes with a double bar line at measure 40.

## [6.] Presto

Measures 1-22 of the [6.] Presto. The music is in 3/8 time, key of B-flat major (two flats). The score consists of four staves. Measure numbers 8, 16, and 22 are indicated at the start of their respective staves. The notation includes various note values (quarter, eighth, sixteenth notes), rests, and accidentals (flats, naturals, sharps). The piece concludes with a double bar line at measure 22.

## Viola

37

32

37

47

57

64

74

80

86

91

97

106

116

The musical score for the Viola part, measures 37 to 116, is written in bass clef with a key signature of one flat (B-flat). The notation includes eighth notes, quarter notes, half notes, and rests. There are several triplet markings (3) and dynamic markings like (b). The score ends with a double bar line and repeat dots.

## [7.] Giga

4

7

10

13

18

20

22

25

28

30

33

*(p)*

*(f)*

*(p)*

*(f)*