

# Sonata I. <sup>a</sup>

É. Jacquet de La Guerre

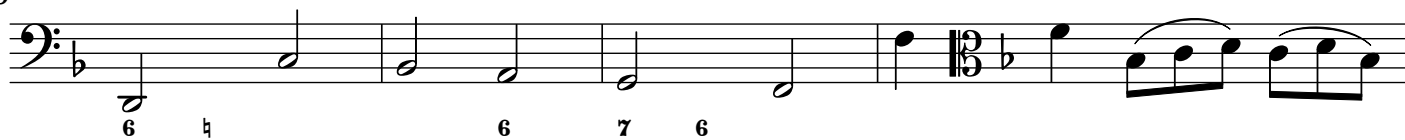
## Basse continue

### [1.] [Ouverture]

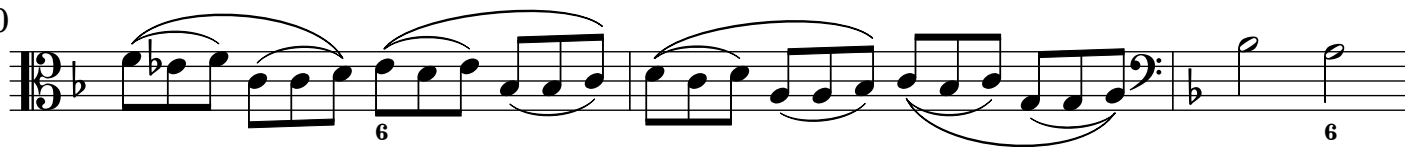
6  
11  
17  
23  
29  
33  
36  
40  
44  
48  
51

## Basse continue

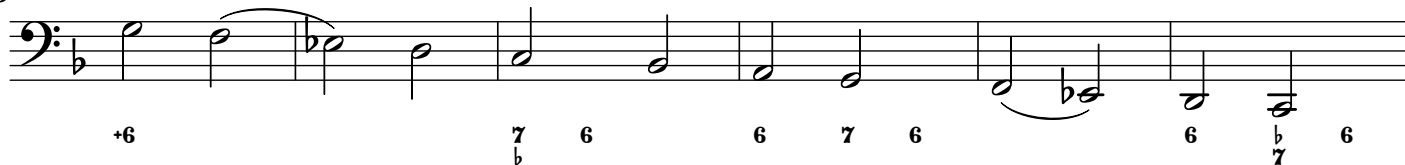
56



60



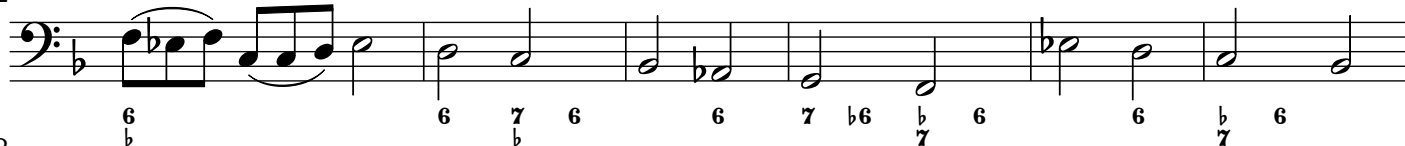
63



69



72



78



83



87



90



93



96



99



## Basse continue

102

105

108

111

114

118

121

124

9 7 6 # 9 6 8 b5

7 b6 b5 9 7 8 b

7 # 6 +6 4/2 b5 # 6 #6 #

+4/2 6 # 6 7 7 6 # 6

6 7 6 7 6 # 6

6 9 8 4/2 8 7 2 b7 5 3 6 5 b4 5 7 4/2 2

## [2.] [Allegro]

6

11

17

b b 4/3

b 6 b 5 6

# 9 # 6 7 b6 # b

6 7 b6 b5 b # 7 6

## Basse continue

23

29

34 [Presto]

41

48

62

70

78

85

95

105

*Tasto Solo*

*Tasto Solo*

Musical score for Basse continue, measures 23 to 105. The score is written in bass clef with a key signature of one flat (B-flat). It includes various musical notations such as eighth, sixteenth, and thirty-second notes, rests, and accidentals. Fingerings are indicated by numbers 1-5. Dynamics like "Tasto Solo" are present. The tempo marking "[Presto]" appears at measure 34. The score ends with a double bar line at measure 105.

Sonata II. <sup>a</sup>

É. Jacquet de La Guerre

## Basse continue

## [1.] [Ouverture]

6

12

17

22

27

32

37

42

46

50

54

Allegro

## Basse continue

58



62



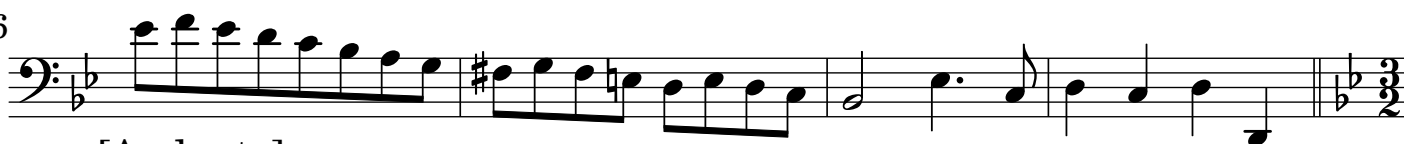
66



71



76



[Andante]

80



84



88



91



94



98



102



## Basse continue

106



110



113



118

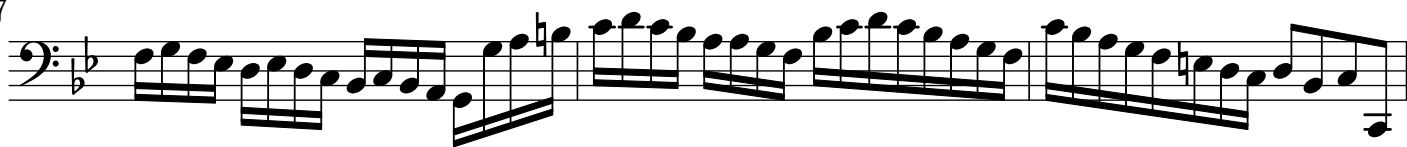


[Allegro]

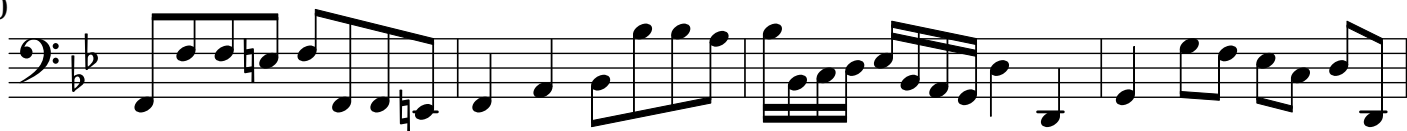
123



127



130



134



137



140



143



148



## Basse continue

154

158

161

164

167

170

173

176

179

182

185

188



## Basse continue

191



194



198



202



206



209



213



217



[Reprise]

221



228



234



240

