

Sinfonia IV.

F. A. Philidor (1726 -1795)

Violoncello / Cembalo

[I.1] Adagio

5

9

13

tasto solo

p

f

+6

[I.2] Allegro

5

9

13

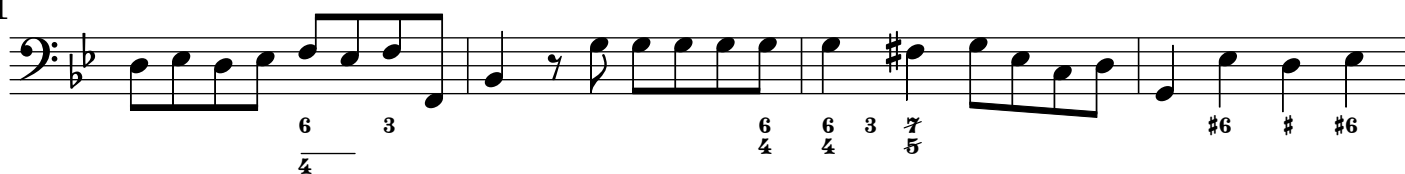
18

Violoncello / Cembalo

27



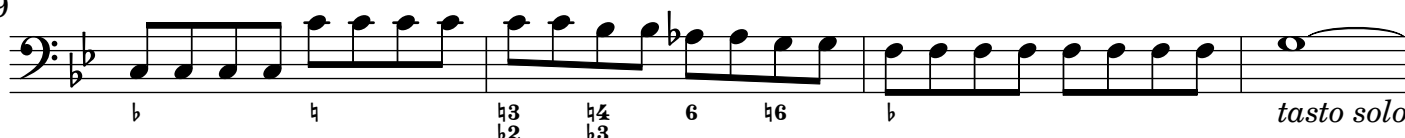
31



35



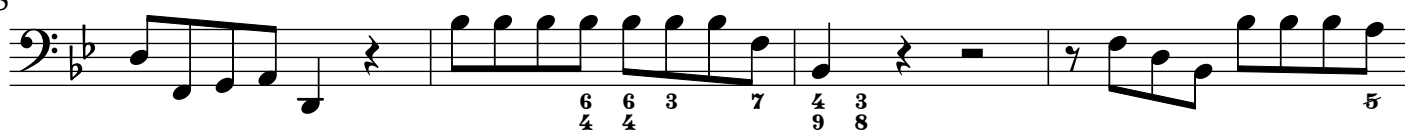
39



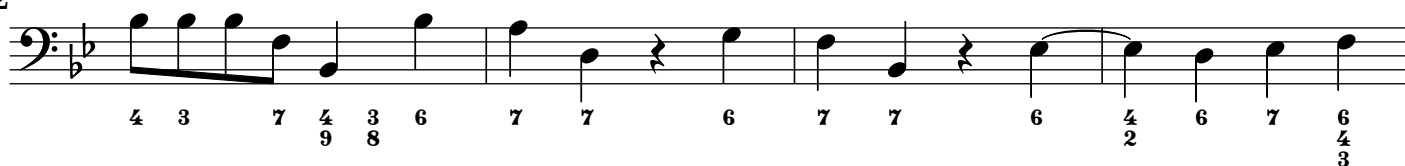
43



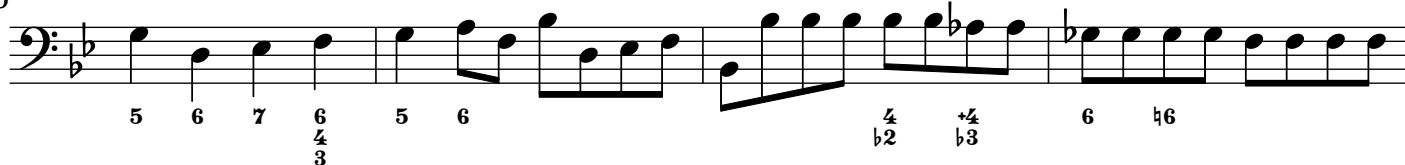
48



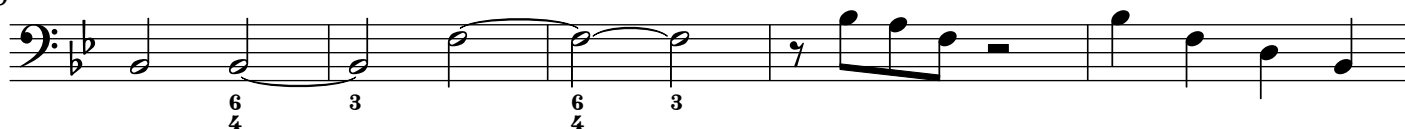
52



56



60



65



Violoncello / Cembalo

[I.3] Aria Gratoso

6 6 7 5 5 6 6 7 5 6

7

6 3 b5 b6 b7 b b5 b6 b7 b

13

b6 6 6 6 6 b 6 6 b6 6 6 b

19

6 b 6 6 6 6 6 6 6 6 b

31

b7 3 7 7 3 b b5 b7 b

38

b6 3 3 6 6 5 6

44

6 7 6 5 3 b5 b6 b7 b5 b6 b7

50

6 6 6 6 3 6 b6 b6 6 b6

56

5 3 6 3 6 6 6 3

Sinfonia V.

F. A. Philidor (1726 -1795)

Violoncello / Cembalo

[II.1] Adagio

3 6 3 5 5 6 3 6 6 #6 p 6 6 b

6 f p f p f *tasto solo*

#2 6 #6 +2 6 6 b #2 6 #6 #

[II.2] Fuga - Moderato

3 6 #4 6 7 b6 #4 6 7 6

7 4 6 7 6 5 4 # 6 6 5 5 4 3 6

10 2 b6 5 4 3 6 6 5 # *tasto solo* f 6

15 b6 5 5 4 3 6 6 5 # p b #4 b6 b4 #4 b6 b6 4 #4 6 #6 4 #4 6 #6

19 4 # b 6 #6 # b 4 # b b6 b7 6 7 #6 # b 5 +6 5 6 6 #

23 p f

27 b +4 b6 #6 4 +4 6 #6 4 #4 6 #6 4 #4 6 #6 4 #4 6 #6 4 b 2 6

32 f *tasto solo*

b 6 #4 6 7 6 #4 6 7 6 #4 6 7 #

Violoncello / Cembalo

36 *p* *f* *p*

40 *f* *p*

44 *tasto solo* *p* *f*

50 *tasto solo* *f*

55 *p*

59 *f* *p* *f*

63 *p* *f* *tasto solo*

[II.3] Andante

10 *p* *f*

19 *f*

Violoncello / Cembalo

27

35

[II.4] Aria con variazioni

11

2. Variatione

21

31

3. Variatione

41

51

4. Variatione

61

71