

# Sinfonia da Chiesa n. 1 op. V

G. Bononcini (1670 - 1747)

## Organo

### [I.1] Grave

8

15

22

29

35

42

*p*

4 3

#2 6 7 6 #6 # b # b 4 #3 # b

# b 4 3 #2 #6 7 6 #6 7 b

4 #3 9 8 b5 9 8 6 5 # 6 5 b7 4 3

2 6 4 3 #2 6 7 6 #6 7 b # b b

7 b 6 5 # # #6 6 6

4 #3 # #6 6 6 4 #3

### [I.2] Allegro

6

11

16

7 # 6 6 # 7 b #2 6

7 b 6 b5 b 7 # 6 6 7 b 2 6 #4 6 7 b 7 # 6

7 6 7 # 6 6 7 # b #2 5 6 #4 6 7 # 6 # 5 5 6 5

6 b5 7 # 6 5 6 #2 5 6 2 6 7 b 4 #3 b #2 6 b b

## Organo

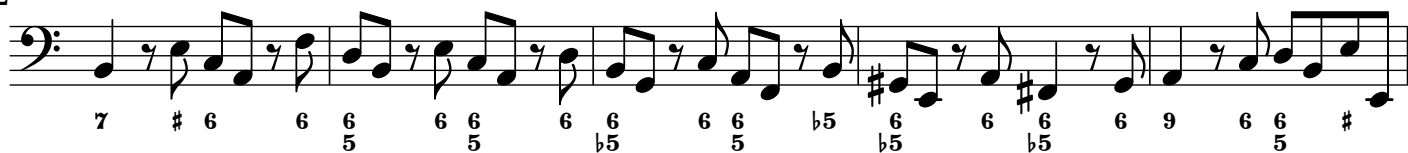
21



26



32



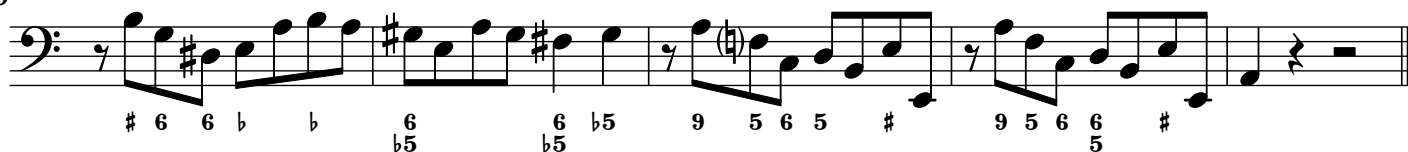
37



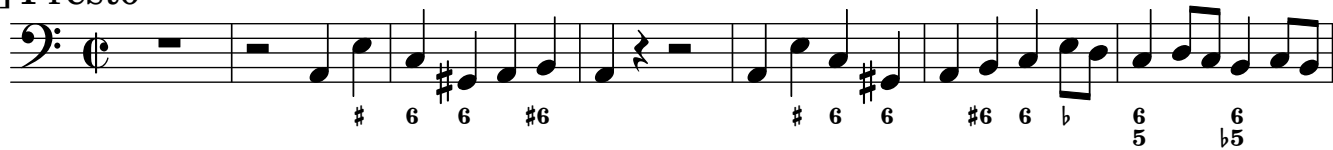
## [I.3] Adagio



5



## [I.4] Presto



8



15



23



31



## Sinfonia da Chiesa n. 2 op. V

G. Bononcini (1670 - 1747)

## Organo

## [II.1] Allegro

6 5  $\flat 4$  2 6 5 6 6 5 6 6 5  $\flat$

4

$\flat 7$  6 5 6 6 5 2 6  $\flat 5$  6 5 2 6  $\flat 5$  2  $\flat$  5 2 6 5

8

2 6 5 2 6  $\flat 7$  6 6 5  $\flat$  6  $\flat 5$   $\flat 5$   $\flat 5$   $\flat 5$   $\flat 5$   $\flat 5$

12

9 # 5 6 6 5 # 6  $\flat 6$  5 2 6 5 5  $\flat 6$  5 7 #6  $\flat$  9 8

16

$\flat 7$  6 6 5 # 6  $\flat 6$  2 6 5 #4 6 6 6 5 6 6 5 2 6 5

20

2 6 5 6 5 6 6 5 2 6  $\flat 5$  6 6 5 6 4 6 5

24

$\flat$  6 5 2 6  $\flat 5$  6 5  $\frac{4}{2}$  6 5 5  $\frac{4}{2}$

27

6 5 5  $\flat 5$  4 #3  $\flat$  6 5 # 6  $\flat 6$  5 2 6 5

31

2 6 5 6 6 5 6 6 5 2 6 5  $\flat 7$  5 6

34

6 5 6 5 5 6 5  $\flat$  6  $\flat 5$   $\flat 5$  9 8 5

38

*p*  $\flat 6$  5  $\flat 5$  9 8 6 5 6 5

## Organo

## [II.2] Adagio

7

13

19

25

## [II.3] Allegro

11

21

31

41

51