

# Cantata "La Scusa" [1780]

## Viola II

B. Galuppi (1706-1785)

### [1.] Sinfonia - Andante

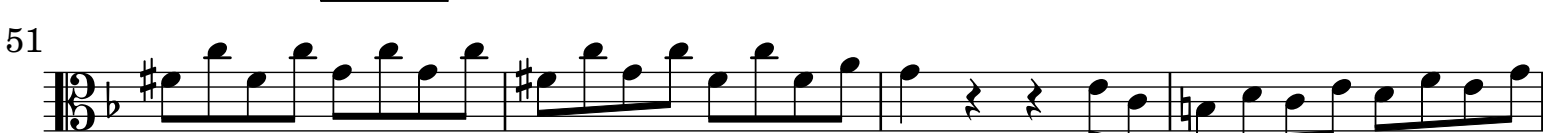


all[egr]o assai

*p*



*f*



[*p*]

*cresc.*



*f*

73

79

90

95

100

107

112

116

120

124

129

136

141

*f*

*p* *cresc.* *f*

Detailed description: This image shows a page of musical notation for the Viola II part of a cantata. The score is written in bass clef with a key signature of one flat (B-flat). It consists of 14 measures, numbered 73 through 141. The notation includes various rhythmic values such as eighth, sixteenth, and thirty-second notes, as well as rests and slurs. Dynamic markings include *f* (forte), *p* (piano), and *cresc.* (crescendo). A triplet of eighth notes is marked with a '3' above it at measure 129. The piece concludes with a double bar line and repeat dots at measure 141.

## [2.] Presto

8 *p*

15 *f p f p f f p*

23 *f*

30

37 (b)

43

49

56

66

75 *p cresc. - - - - f [p]*

[*f*]

## [3.] [Recitativo] tacet

## [4.] Largo parlante ed espressivo

6 *ten p f p*

13 *f* 5

25

33

39 *f* %

45

51 *f*

56 *f*

63 *f p f p f*

68

and[an]te

74

87 *f p f*

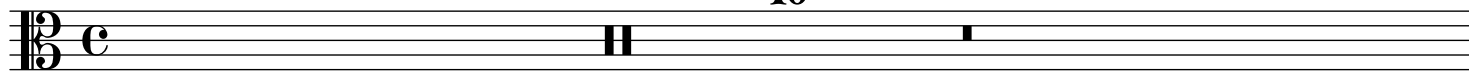
P[ri]mo tempo

100

104 *p* Al %

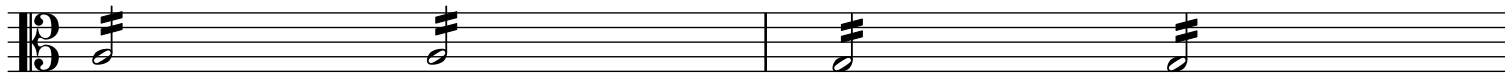
## [5.] [Recitativo]

10

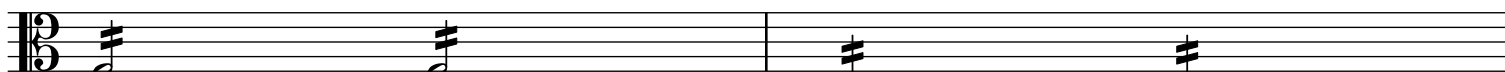


and[an]te

11



13



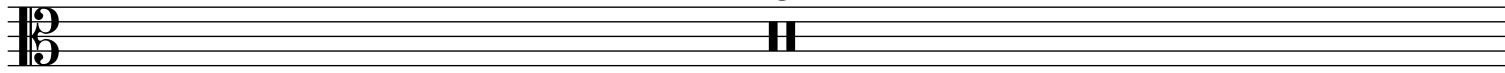
15



all[egr]o

23

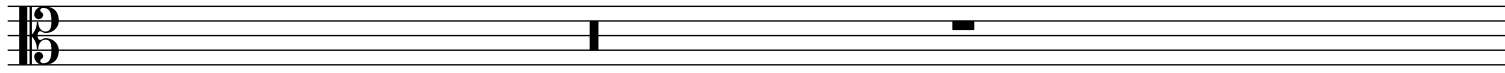
8



larghetto

31

5



presto

36

7



## [6.] Larghetto



5



9



13



17



21



25



30



34



41



45



50



55



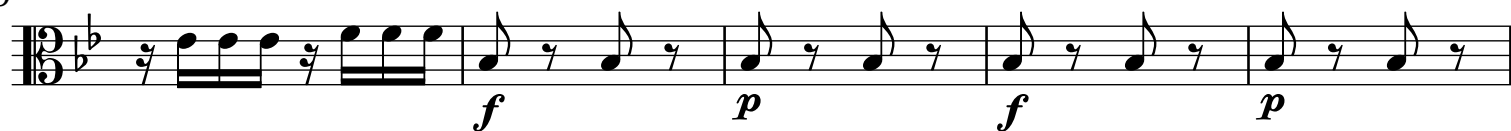
59



65



69



74



78



82

