

Concerto [TWV 53:h1]

Calchedon

G. Ph. Telemann (1681-1767)

[1.] Grave



[2.] Vivace - Gavotta Italiana



24

32

50

57

71

91

100

109

117

132

138

145

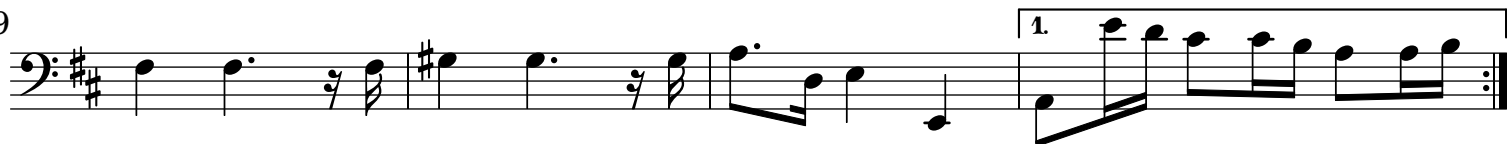
[3.] Dolce



6



9



13



18



23



[4.] Allegro



9



18



26



Musical score for Calchedon, measures 38-131. The score is written in bass clef with a key signature of two sharps (F# and C#). The music features a variety of rhythmic patterns, including eighth and sixteenth notes, and rests. Measure 89 contains a triplet of eighth notes. The piece concludes with a double bar line at measure 131.

38

47

55

63

72

82

89

103

113

122

131