

Concerto per Violoncello in Do maggiore [RV 400]

A. Vivaldi (1678 -1741)

Violoncello

[I.1] All[egr]o

4

8

11

14

17

20

22

24

26

29

32

Violoncello

35

38

40

43

46

49

51

53

55

58

61

64

This musical score for Violoncello contains ten staves of music, numbered 35 through 64. The notation is in bass clef. Measures 35-37 are in 3/4 time. Measures 38-39 are in 3/8 time. Measures 40-42 are in 3/8 time. Measures 43-45 are in 3/4 time. Measures 46-48 are in 3/4 time. Measures 49-52 are in 3/8 time. Measures 53-54 are in 3/8 time. Measures 55-57 are in 3/8 time. Measures 58-60 are in 3/4 time. Measures 61-63 are in 3/8 time. Measures 64-65 are in 3/8 time. The score includes various musical notations such as eighth notes, sixteenth notes, triplets, and a trill in measure 40. There are also dynamic markings like 'f' and 'p'.

Violoncello

66

68

70

72

74

77

[I.2] Largo

3

5

11

16

22

26

Violoncello

[I.3] All[egr]o non molto

Violoncello score for Vivaldi's 2 Concerti RV 400 and RV 409, movement I.3. The score is in bass clef, 3/4 time, and consists of 44 measures. It features various musical notations including triplets, trills, and key signatures changes.

Measures 1-5: Bass clef, 3/4 time. Measure 1 has a 3-measure rest. Measure 4 has a trill (tr) over a note.

Measures 6-10: Bass clef, 3/4 time. Measure 6 has a 3-measure rest. Measure 7 has a 3-measure rest. Measure 8 has a 3-measure rest. Measure 9 has a 3-measure rest. Measure 10 has a 3-measure rest.

Measures 11-15: Bass clef, 3/4 time. Measure 11 has a 3-measure rest. Measure 12 has a 3-measure rest. Measure 13 has a 3-measure rest. Measure 14 has a 3-measure rest. Measure 15 has a 3-measure rest.

Measures 16-19: Bass clef, 3/4 time. Measure 16 has a 3-measure rest. Measure 17 has a 3-measure rest. Measure 18 has a 3-measure rest. Measure 19 has a 3-measure rest.

Measures 20-24: Bass clef, 3/4 time. Measure 20 has a 3-measure rest. Measure 21 has a 3-measure rest. Measure 22 has a 3-measure rest. Measure 23 has a 3-measure rest. Measure 24 has a 3-measure rest.

Measures 25-27: Bass clef, 3/4 time. Measure 25 has a 3-measure rest. Measure 26 has a 3-measure rest. Measure 27 has a 3-measure rest.

Measures 28-31: Bass clef, 3/4 time. Measure 28 has a 3-measure rest. Measure 29 has a 3-measure rest. Measure 30 has a 3-measure rest. Measure 31 has a 3-measure rest.

Measures 32-36: Bass clef, 3/4 time. Measure 32 has a 3-measure rest. Measure 33 has a 3-measure rest. Measure 34 has a 3-measure rest. Measure 35 has a 3-measure rest. Measure 36 has a 3-measure rest.

Measures 37-40: Bass clef, 3/4 time. Measure 37 has a 3-measure rest. Measure 38 has a 3-measure rest. Measure 39 has a 3-measure rest. Measure 40 has a 3-measure rest.

Measures 41-43: Bass clef, 3/4 time. Measure 41 has a 3-measure rest. Measure 42 has a 3-measure rest. Measure 43 has a 3-measure rest.

Measures 44-47: Bass clef, 3/4 time. Measure 44 has a 3-measure rest. Measure 45 has a 3-measure rest. Measure 46 has a 3-measure rest. Measure 47 has a 3-measure rest.

Violoncello

47

50

53

56

60

65

69

74

78

82

86

91

Concerto per Violoncello in Mi minore [RV 409]

A. Vivaldi (1678 -1741)

Violoncello

[II.1] Ad[agi]o

7

Allegro molto

12

16

20

Adagio

25

30

34

All[egr]o

38

42

46

Adagio

51

Violoncello



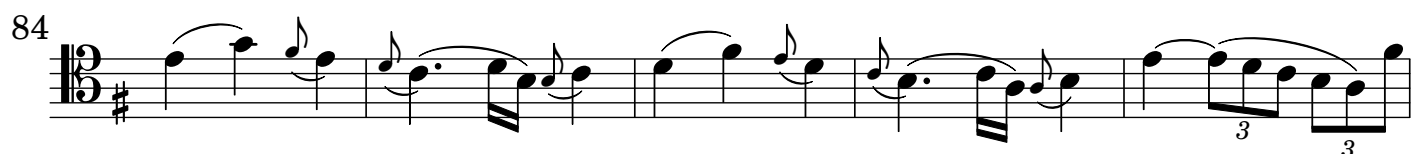
All[egr]o



Adagio



Adagio



Adagio



Violoncello

[II.2] All[egr]o

3

5 Ad[agi]o

7 All[egr]o

9

11

13 Ad[agi]o All[egr]o

16

18

20

22

24 Adagio

Violoncello

[II.3] All[egr]o

5

8

11

13

15

17

19

21

23

26

29

Violoncello

32

35

38

40

42

44

47

51

54

57

60

63

This musical score for Violoncello covers measures 32 to 63. The key signature is one sharp (F#). The score is divided into systems of five staves each. Measures 32-34 are in 2/4 time. At measure 38, the time signature changes to 3/4. Measures 44-46 are in 3/4 time. At measure 47, the time signature changes to 3/8. Measures 51-53 are in 3/8 time. At measure 54, the time signature changes to 3/4. Measures 57-59 are in 3/4 time. At measure 60, the time signature changes to 3/8. Measures 63-65 are in 3/8 time. The notation includes various note values, rests, and articulation marks such as slurs and accents. Trills are present in measures 44, 47, 51, 54, 57, 60, and 63. Triplet markings (the number 3) are located under measures 60 and 61.

Violoncello

66

70

73

75

77

80

83

86

88

91

95

98

The musical score for the Violoncello part consists of 12 staves of music, numbered 66 to 98. The key signature is G major (one sharp) for measures 66-94 and F major (one flat) for measures 95-98. The time signature is 3/8. The notation includes eighth notes, sixteenth notes, and triplets, with various accidentals and rests. The piece concludes with a final measure at 98.