

Sinfonia a 4 [RV 192]

A. Vivaldi (1678-1741)

Basso

[I.1 Allegro]

6

11

17

25

31

36

40

44

48

[I.2 Grave]

6

[I.3 Allegro]

Measures 1-31 of the Bassoon part in I.3 Allegro. The key signature is one sharp (F#), and the time signature is 3/4. The score includes fingerings (e.g., #3, #, #6, 5, 6, 5) and articulation marks (accents, slurs, and a fermata at the end).

[I.4 Allegro]

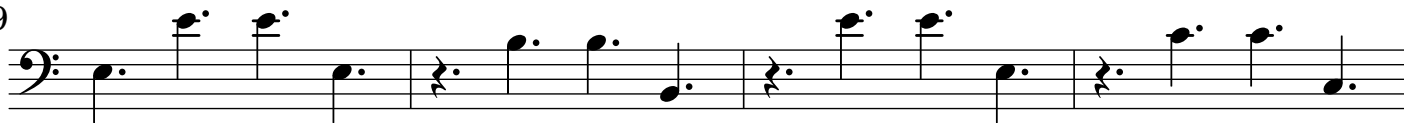
Measures 1-21 of the Bassoon part in I.4 Allegro. The key signature is one sharp (F#), and the time signature is 12/8. The score includes fingerings (e.g., (b), #) and articulation marks (accents, slurs, and a fermata at the end).

Basso

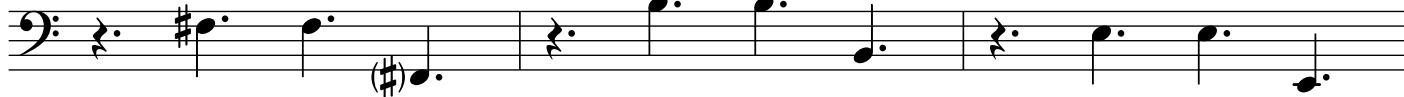
25



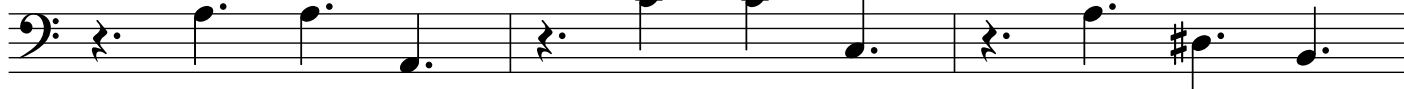
29



33



36



39



42



45



48



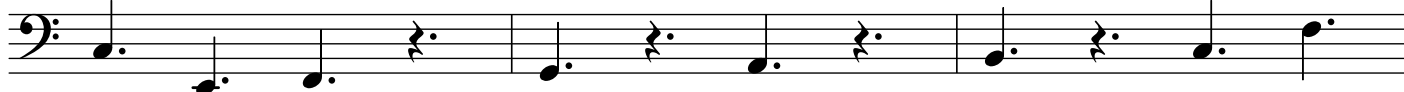
51



55



59



62



Concerto a 4 [RV 126]

A. Vivaldi (1678-1741)

Basso

[II.1] All[egr]o

4

3

9

11

13

15

18

21

24

29

31

33

#6 #3 b3

b3 b3 # 6 #4

5 #2 #3 6 #4 # 6 5 #

#6 #4 b3 #6 #4 b3 5 4 #3

The bass line is written on a single staff with a bass clef and a key signature of two sharps (F# and C#). The melody consists of eighth and quarter notes, with a repeat sign at the end.

[illegible]

The bass line is written on a single staff in bass clef with a key signature of one sharp (F#). It consists of three measures. The first measure contains a triplet of eighth notes on the G2 line, marked with a '3' above the notes. The second measure contains a quarter note on G2, followed by a quarter rest. The third measure contains a quarter note on G2, followed by a quarter rest. The notes are G2, G2, and G2.

[II.2] And[an]te

[illegible]

Musical notation for the bass line of 'The Rose Tree'. The key signature has one flat (B-flat). The melody consists of several measures with notes and rests. Below the staff, there are fingerings: 7, 7, 7, 5, 5, 4, 3.

Musical notation for the bass line of 'The Rose Tree'. The key signature has one flat (B-flat). The melody consists of eighth and sixteenth notes, with some triplets indicated by a '3' over a group of notes. The notation is on a single staff.

The bass line of 'The Rose Tree' is written in 6/4 time. It begins with a half note G2, followed by a quarter rest, then a half note F2, and a quarter rest. The melody then continues with a half note E2, a quarter note D2, and a quarter note C2. This is followed by a half note B1, a quarter note A1, and a quarter note G1. The line then features a half note F1, a quarter note E1, and a quarter note D1. Finally, it ends with a half note C1, a quarter note B1, and a quarter note A1. The notation includes a key signature of one flat (Bb) and a common time signature of 6/4.

The bass line of 'The Rose Tree' is written in G major (one sharp) and 3/4 time. It begins with a half note G (labeled 7#), followed by a half note F (labeled 6 4), and then a half note E (labeled #3). The melody continues with a half note D (labeled #), followed by a half note C (labeled #), and then a half note B (labeled #). The piece concludes with a half note A (labeled #).

[illegible]

Tasto Solo

Musical notation for the bass line of 'The Rose Tree'. The key signature is one flat (B-flat). The melody starts with a half note B-flat, followed by a quarter note G, a quarter note F, and a quarter note E. This is followed by a half note D, a quarter note C, a quarter note B, and a quarter note A. The melody then continues with a half note G, a quarter note F, a quarter note E, and a quarter note D. The melody ends with a half note C, a quarter note B, a quarter note A, and a quarter note G. The melody is written in a single staff with a treble clef.

[II.3] All[egr]o molto

6

7

13

19

25

30

36

42

48

54

60

66