

## Concerto di Parigi n. 5 in Do maggiore [RV 114]

### A. Vivaldi (1678-1741)

# Basso

[1.] All[egr]o

4

7

10

14

17

20

23

26

29

32

35

## Basso

38 *f*

41 *p*

44 *f*

47

50

53

56

58 *f*

61

64 *f*

67

70 [2.] Adagio *p* *f*

Detailed description of the musical score: The score is for a Bassoon (Basso) part, measures 38 to 70. It is written in bass clef with a key signature of one sharp (F#).  
 - Measure 38: Starts with a half rest, followed by a quarter note F#4, a quarter note E4, a quarter note D4, and a quarter note C4. A fermata is placed over the C4. A forte (*f*) dynamic marking is at the end.  
 - Measure 41: Starts with a half rest, followed by a quarter note B3, a quarter note A3, a quarter note G3, and a quarter note F#3. A piano (*p*) dynamic marking is above the G3.  
 - Measure 44: Starts with a half rest, followed by a quarter note E4, a quarter note D4, a quarter note C4, and a quarter note B3. A forte (*f*) dynamic marking is below the C4.  
 - Measure 47: Starts with a half rest, followed by a quarter note A3, a quarter note G3, a quarter note F#3, and a quarter note E4. A forte (*f*) dynamic marking is below the F#3.  
 - Measure 50: Starts with a half rest, followed by a quarter note D4, a quarter note C4, a quarter note B3, and a quarter note A3. A forte (*f*) dynamic marking is below the B3.  
 - Measure 53: Starts with a half rest, followed by a quarter note G3, a quarter note F#3, a quarter note E4, and a quarter note D4. A forte (*f*) dynamic marking is below the F#3.  
 - Measure 56: Starts with a half rest, followed by a quarter note C4, a quarter note B3, a quarter note A3, and a quarter note G3. A forte (*f*) dynamic marking is below the B3.  
 - Measure 58: Starts with a half rest, followed by a quarter note F#3, a quarter note E4, a quarter note D4, and a quarter note C4. A forte (*f*) dynamic marking is below the F#3.  
 - Measure 61: Starts with a half rest, followed by a quarter note B3, a quarter note A3, a quarter note G3, and a quarter note F#3. A forte (*f*) dynamic marking is below the B3.  
 - Measure 64: Starts with a half rest, followed by a quarter note E4, a quarter note D4, a quarter note C4, and a quarter note B3. A forte (*f*) dynamic marking is below the E4.  
 - Measure 67: Starts with a half rest, followed by a quarter note A3, a quarter note G3, a quarter note F#3, and a quarter note E4. A forte (*f*) dynamic marking is below the A3.  
 - Measure 70: Starts with a half rest, followed by a quarter note D4, a quarter note C4, a quarter note B3, and a quarter note A3. A piano (*p*) dynamic marking is below the D4. The measure ends with a repeat sign and a tempo change to Adagio. The final measure shows a forte (*f*) dynamic marking and a key signature change to two sharps (F# and C#).

## Basso

## [3.] Ciaccona

7

*f*

6 5

*p*

13

6 5

*f*

18

6 5

23

28

6 5

33

38

6 5

$\flat 7$  6 7 6

43

7 6 7

6  $\flat 5$  6 5 9 8

48

53

6  $\flat 5$

58

6 5

## Basso

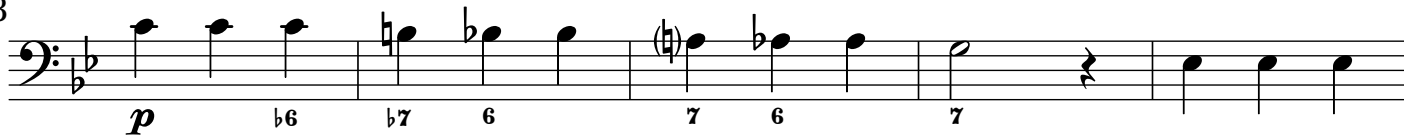
63



68



73



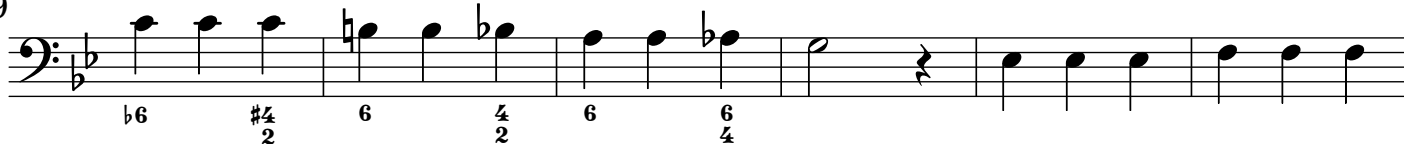
78



83



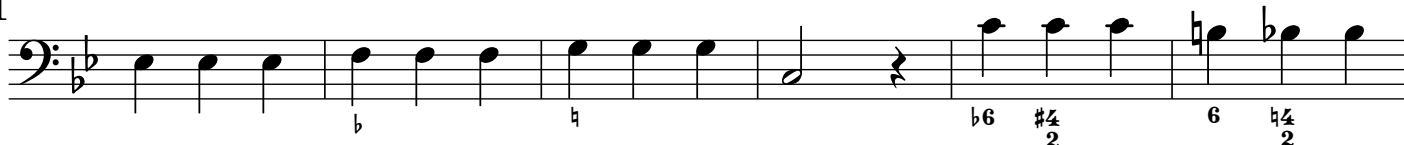
89



95



101



107



112



117



122



## Concerto per Violino in Si minore [RV 390]

A. Vivaldi (1678-1741)

## Basso

## [1.] And[ant]e molto

Measures 1-11 of the first movement. The key signature is B minor (two sharps). The time signature is common time (C). The tempo is And[ant]e molto. The dynamics range from *p* (piano) to *f* (forte). The notation includes various note values, rests, and fingerings (e.g., 6, 5, 7, #).

## All[egr]o non molto

Measures 12-52 of the second movement. The key signature is B minor. The tempo is All[egr]o non molto. The dynamics range from *f* (forte) to *pp* (pianissimo). The notation includes various note values, rests, and fingerings (e.g., 6, 5, 4, 3, 7, #). There is a measure rest for 13 measures starting at measure 39.

## Basso

56 15

74

77

80 4 8

94

97

100

103 8

113

116

119

122

*p*

*f*

*p*

*f*

[2.] Larghetto tacet

## Basso

## [3.] All[egr]o

Musical score for Basso, [3.] All[egr]o. The score is written in bass clef, key of D major (two sharps), and 2/4 time. It consists of 78 measures, divided into systems of four measures each. The score includes various musical notations such as eighth notes, sixteenth notes, and rests. Fingerings are indicated by numbers 1-7. Dynamics include *p* (piano) and *f* (forte). A repeat sign with a first ending bracket is present at measure 34.

Measure numbers are indicated at the beginning of each system: 4, 7, 10, 13, 17, 22, 26, 30, 34, 71, 74, 78.

## Basso

83

87

91

109

113

117

130

133

137

141

145

151

198