

Concerto per Oboe [RV 454]

A. Vivaldi (1678-1741)

Basso

[1.] All[egr]o

6

11

16

22

41

46

62

67

73

79

84

15

11

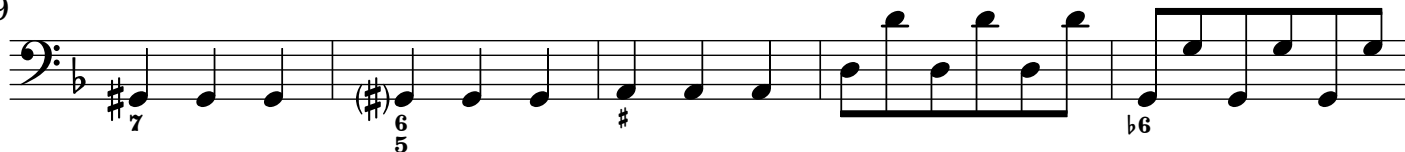
4

Basso

93



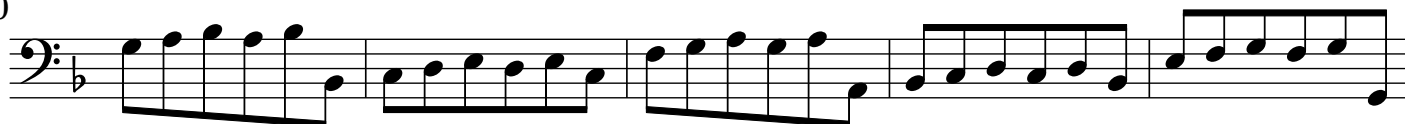
99



104



110



115



[2.] Largo



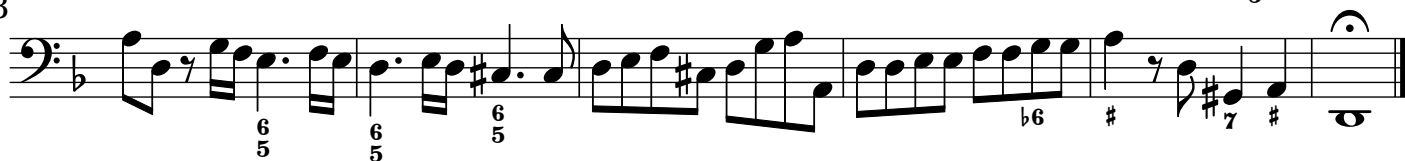
5



9



13



[3.] All[egr]o



5



9



Basso

13

17

21

25

36

41

45

50

54

58

68

72

The musical score for the Basso part, measures 13 to 72, is written in bass clef with a key signature of one flat (B-flat). The notation includes various musical symbols such as eighth notes, sixteenth notes, and rests, along with fingerings and articulation marks. The measures are numbered 13, 17, 21, 25, 36, 41, 45, 50, 54, 58, 68, and 72. The score is divided into systems, with measures 13-16, 17-20, 21-24, 25-35, 36-40, 41-44, 45-49, 50-53, 54-57, 58-67, 68-71, and 72. The notation includes various musical symbols such as eighth notes, sixteenth notes, and rests, along with fingerings and articulation marks. The measures are numbered 13, 17, 21, 25, 36, 41, 45, 50, 54, 58, 68, and 72.